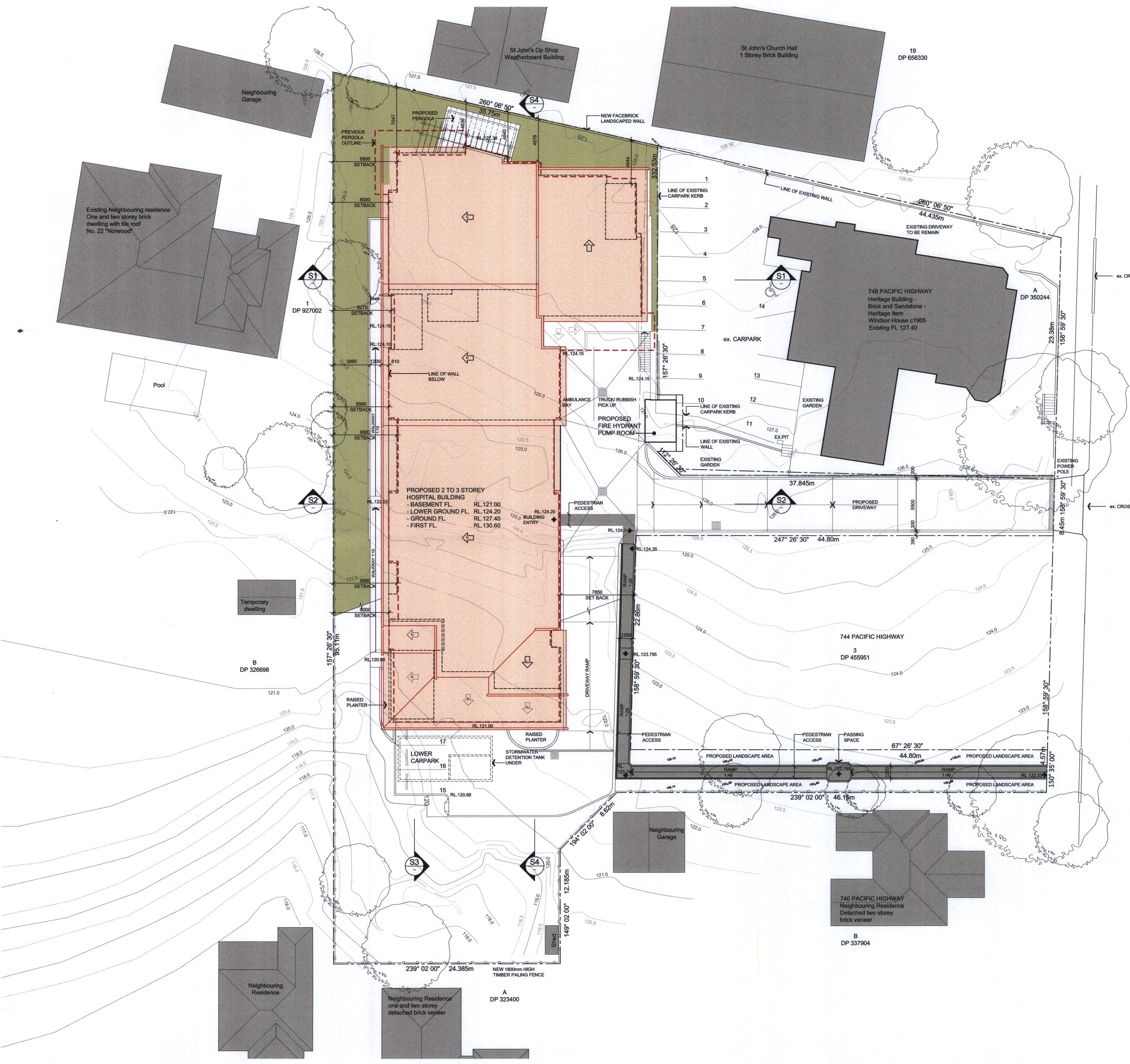


DEVELOPMENT STATISTIC		
EXISTING	APPROVED DA	SECTION 96
EXISTING AREA PROPOSED LOT 1: 3340 m ² CURRENTLY DESCRIBED AS LOT 1 DP 85123 1746 and 748B PACIFIC HIGHWAY AREA 1785 m ² and 742 PACIFIC HIGHWAY Area 1552 m ²	LOT 1 SITE AREA 3441.1 m ² PARKING BAY 27 (Basement Level) 4 (Lower Ground Level) AMBULANCE BAY 1 LOADING / RUBBISH PICKUP 1 Lower Basement 0 m ² Lower Ground 884.3 m ² Ground Floor 1,050.1 m ² First Floor 959.7 m ² TOTAL 2,794.1 m ²	LOT 1 SITE AREA 3441.1 m ² PARKING BAY 27 (Basement Level) 0 (Lower Ground Level) AMBULANCE BAY 1 LOADING / RUBBISH PICKUP 1 Lower Basement 0 m ² Lower Ground 738.9 m ² Ground Floor 1,050.4 m ² First Floor 950.8 m ² TOTAL 2,740.1 m ²
EXISTING AREA PROPOSED LOT 2 CURRENTLY DESCRIBED AS LOT A DP350244 748 PACIFIC HIGHWAY AREA 1375 m ²	LOT 2 SITE AREA 1,271.5 m ² PARKING BAYS 10	LOT 2 SITE AREA 1,271.5 m ² PARKING BAYS 14
TOTAL AREA OF PROPOSED SITES 4,715.6 m ²	EXISTING GFA 366.8 m ² TOTAL SITE 4,715.0 m ² TOTAL PROPOSED AREA 3,070.9 m ² expressed as floor ratio 0.65 max floor ratio 0.8	EXISTING GFA 366.8 m ² TOTAL SITE 4,715.0 m ² TOTAL PROPOSED AREA 3,141.7 m ² expressed as floor ratio 0.66 max floor ratio 0.8

LEGEND	
[Orange Fill]	PROPOSED BUILDING
[Grey Fill]	EXISTING HOUSE
[Dashed Line]	EXISTING LEVEL RL
[Solid Line]	NEW FINISHED LEVEL RL
[Dotted Line]	TOW RL
[Circle]	PROPOSED TOP OF WALL LEVEL
[Circle]	TREES TO BE RETAINED
[Dashed Line]	OUTLINE OF APPROVED DA BUILDING OUTLINE
[Line]	NEW 1800 HIGH TIMBER PALING FENCE



PACIFIC HIGHWAY



B	Preliminary Issue for discussion	05.03.18
A	Section 96 Issue	14.11.17
P5	Development Statistic added	25.10.17
P4	Preliminary Issue for discussion & review	20.10.17
P3	Preliminary Issue for discussion & review	14.09.17
P2	Preliminary Issue for discussion	25.08.17
P1	Preliminary Issue	21.08.17
No.	Amendment	Date

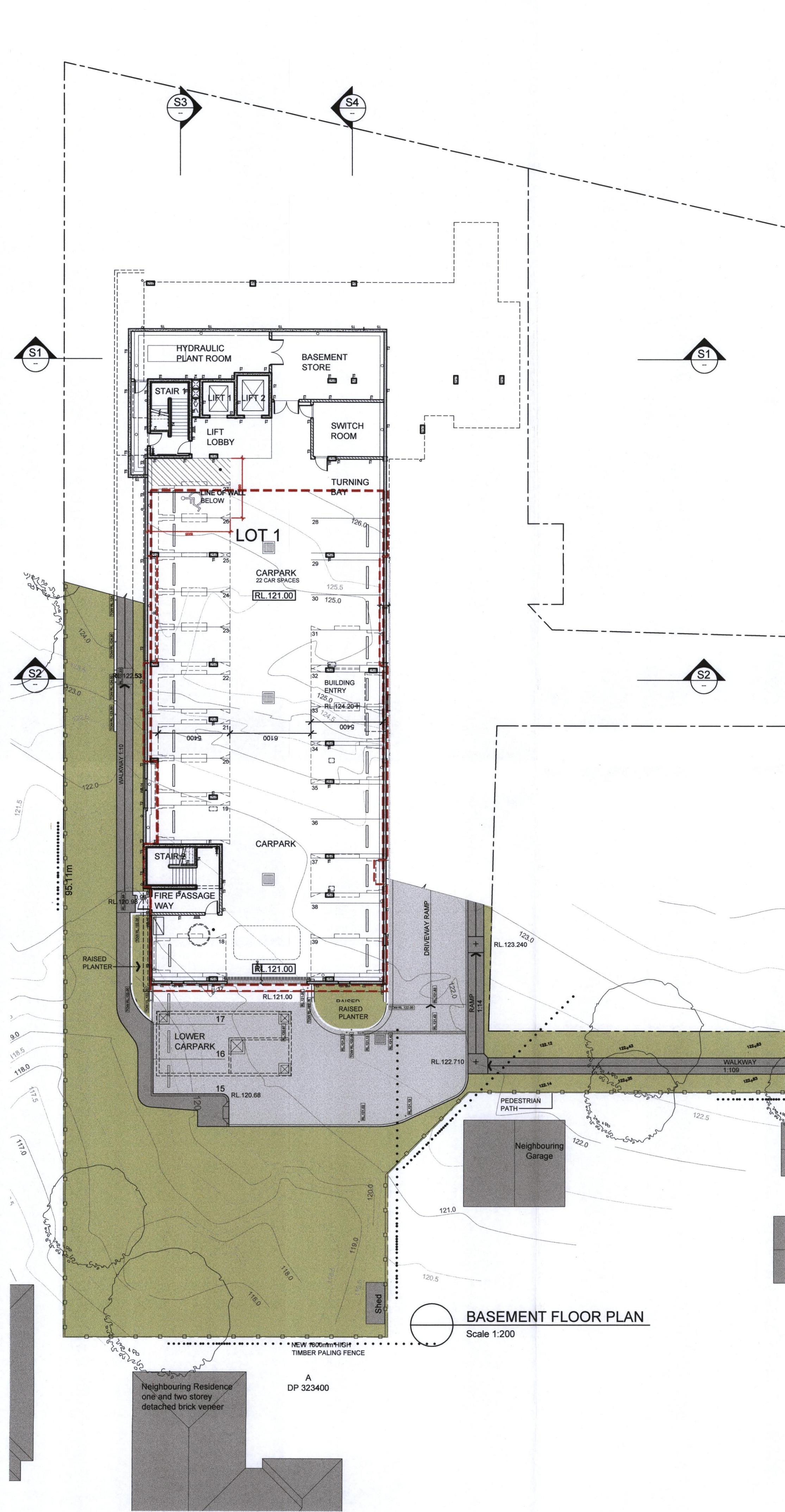
Project
LAWSON CLINIC
 No's 742, 746 - 745A Pacific Highway, Gordon
 Drawing
SITE PLAN ACCESS OPTION 02.03.18

THE LAWSON CLINIC
RICHARD CROOKES
CONSTRUCTIONS

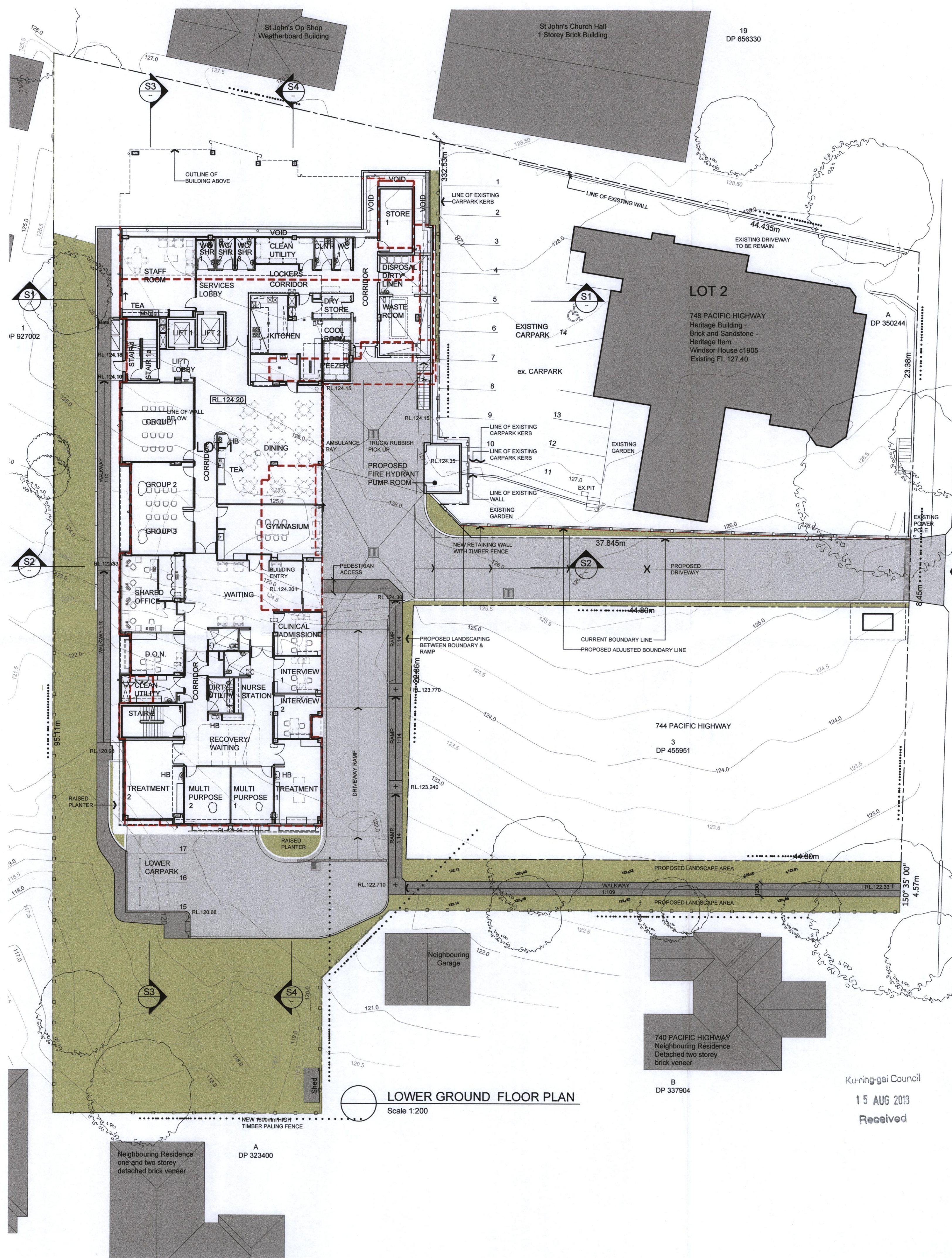
boffa robertson group
 architecture, health and aged care planning, project management
 Suite 7, Level 1, Epica, 9 Railway Street
 Chesham NSW 2007
 AUSTRALIA
 Tel: (02) 9406 7000
 Fax: (02) 9406 7099
 Email: brgroup@brgr.net

Date	MAR 2018	Job No. :	Drawing
Scale	1:200 @ A1		
Drawn	JN / WWGK		1723 / S96-01
Amendment	B		

Ku-ring-gai Council
 15 AUG 2018
 Received



BASEMENT FLOOR PLAN
 Scale 1:200



LOWER GROUND FLOOR PLAN
 Scale 1:200

LEGEND

[Symbol]	PROPOSED BUILDING
[Symbol]	EXISTING HOUSE
[Symbol]	LANDSCAPING
[Symbol]	EXISTING LEVEL RL
[Symbol]	NEW FINISHED LEVEL RL
[Symbol]	PROPOSED TOP OF WALL LEVEL
[Symbol]	TREES TO BE RETAINED
[Symbol]	OUTLINE OF APPROVED DA BUILDING OUTLINE
[Symbol]	NEW 1800 HIGH TIMBER PALING FENCE

0m 1 2 3 5 7m
 SCALE: 1:100

B	Response to KMC letter dated 22.02.18	09.03.18
A	Section 96 Issue	14.11.17
P3	Preliminary Issue for review	25.10.17
P2	Preliminary Issue for review	24.10.17
P1	Preliminary Issue for review	14.09.17
No.	Amendment	Date

Project
LAWSON CLINIC
 No's 742, 746 - 745A Pacific Highway, Gordon

Drawing
BASEMENT & LOWER GROUND FLOOR PLAN

THE LAWSON CLINIC
RICHARD CROOKES CONSTRUCTIONS
 boffa robertson group
 architecture, health and aged care planning, project management

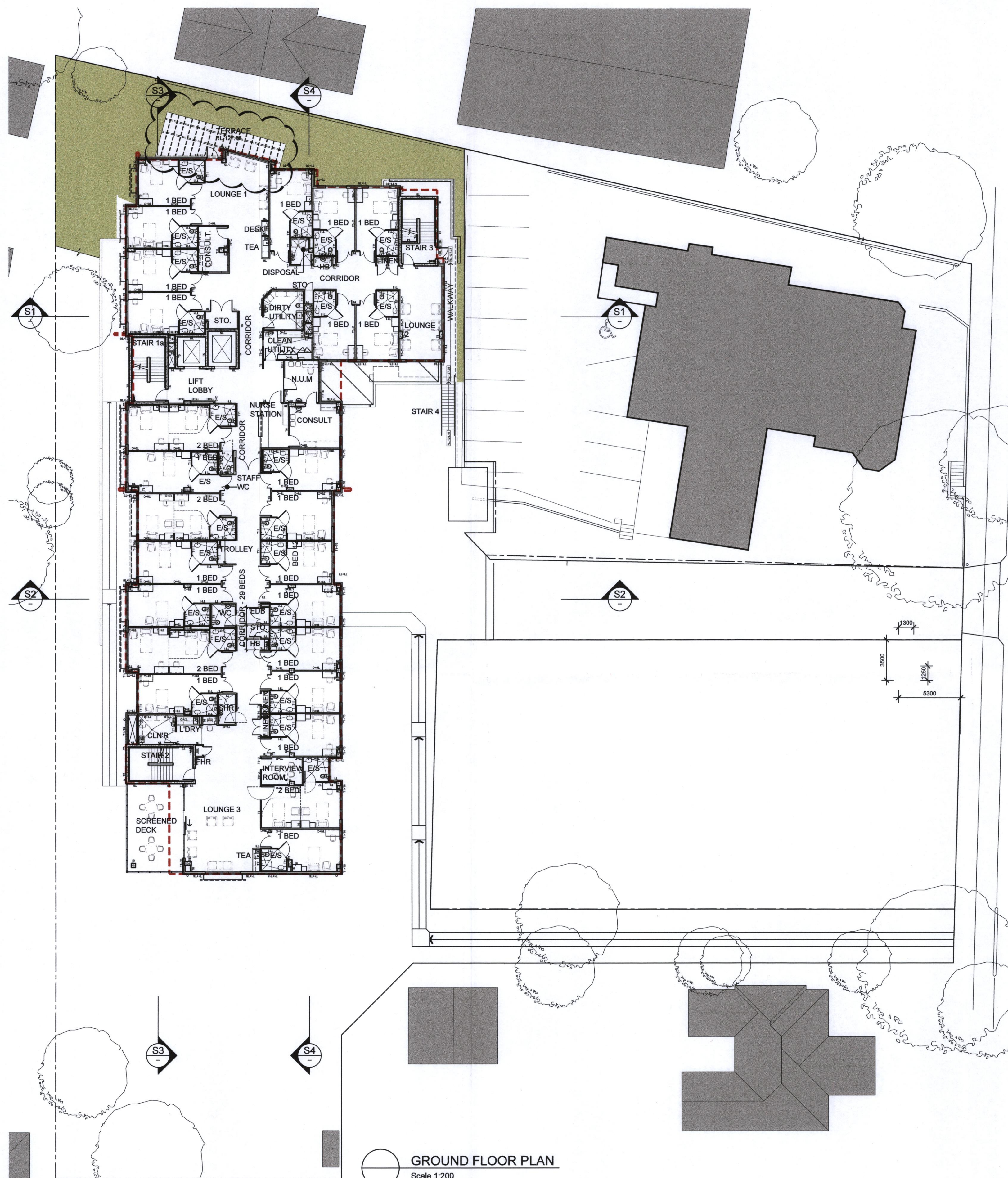
kurung-gai Council
 15 AUG 2013
 Received

boffa robertson group
 Suite 7, Level 1 Epicra, 9 Railway Street
 Cheshwood NSW 2067
 AUSTRALIA
 Tel: (02) 9406 7000
 Fax: (02) 9406 7099
 Email: brg@brg.net

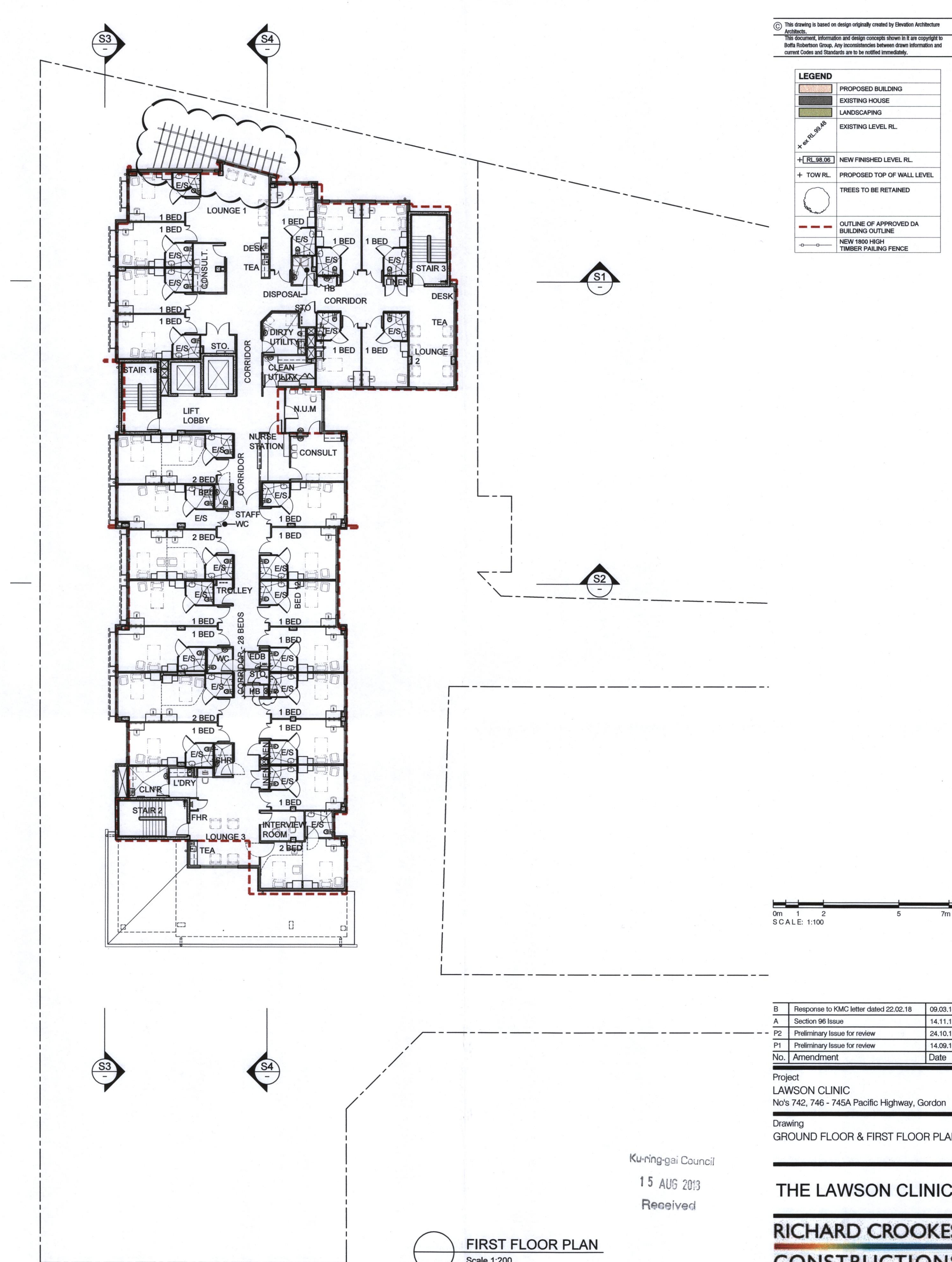
Date	AUG 2017	Job No. : Drawing
Scale	1:200 @ A1	
Drawn	WW	1723 / S96-02
Amendment	B	

© This drawing is based on design originally created by Elevation Architecture Architects.
 This document, information and design concepts shown in it are copyright to Boffa Robertson Group. Any inconsistencies between drawn information and current Codes and Standards are to be notified immediately.

LEGEND	
	PROPOSED BUILDING
	EXISTING HOUSE
	LANDSCAPING
	EXISTING LEVEL RL
	NEW FINISHED LEVEL RL
	TOW RL
	PROPOSED TOP OF WALL LEVEL
	TREES TO BE RETAINED
	OUTLINE OF APPROVED DA BUILDING OUTLINE
	NEW 1800 HIGH TIMBER PALING FENCE



GROUND FLOOR PLAN
 Scale 1:200



FIRST FLOOR PLAN
 Scale 1:200



B	Response to KMC letter dated 22.02.18	09.03.18
A	Section 96 Issue	14.11.17
P2	Preliminary Issue for review	24.10.17
P1	Preliminary Issue for review	14.09.17
No.	Amendment	Date

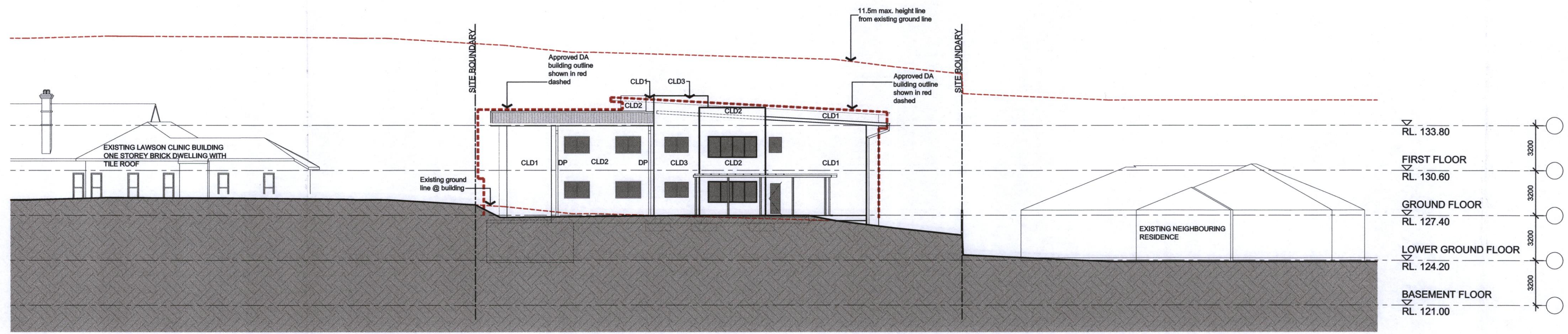
Project
LAWSON CLINIC
 No's 742, 746 - 745A Pacific Highway, Gordon
 Drawing
GROUND FLOOR & FIRST FLOOR PLAN

Ku-ring-gai Council
 15 AUG 2013
 Received

THE LAWSON CLINIC
RICHARD CROOKES
CONSTRUCTIONS

boffa robertson group
 architecture, health and aged care planning, project management
 Suite 7, Level 1 Epica, 9 Railway Street
 Chateauwood NSW 2067
 AUSTRALIA
 Tel: (02) 9406 7000
 Fax: (02) 9406 7099
 Email: brgroup@brgr.net

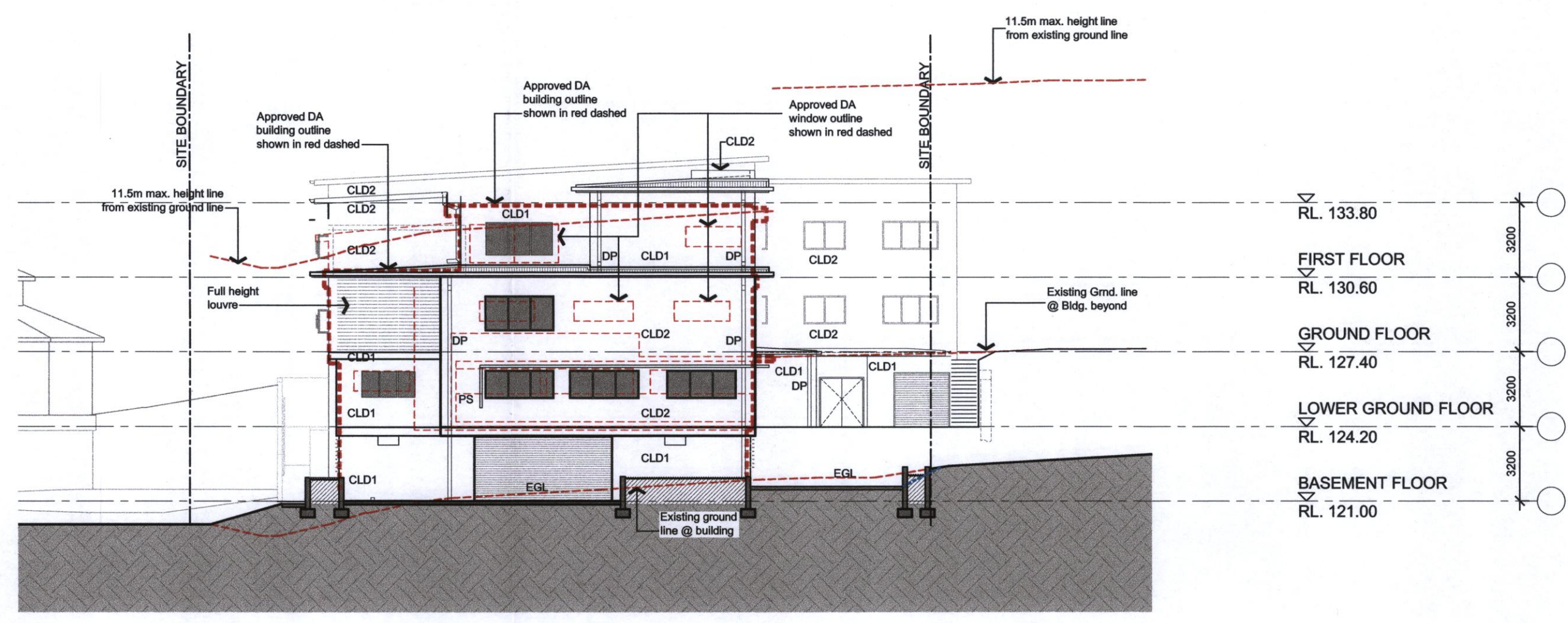
	Date	AUG 2017	Job No. : Drawing
	Scale	1:200 @ A1	
	Drawn	WW	1723 / S96-03
	Amendment	B	



3 NORTH ELEVATION
 Scale 1:200

LEGEND	
CONC	CONCRETE
CLD1	HEBEL with Dulux AcraTex render
CLD2	HEBEL with Dulux AcraTex render
CLD3	HEBEL with Dulux AcraTex render
CLD4	VITRACORE G2
ROOF GUTTER DPs	WOODLAND GREY
DP	DOWN PIPE
EGL	EXISTING GROUND LINE
FGL	FINISHED GROUND LINE
PS	PRIVACY SCREEN
RT	RETAINING WALL
RWH	RAIN WATER HEAD
TOW	TOP OF WALL

NOTES
 1. Refer to aluminium window & louvre schedule for glazing details



4 SOUTH ELEVATION
 Scale 1:200

SCALE: 1:200	
F	Sun shading & colour revision 30.05.18
E	Response to KMC letter dated 22.02.18 09.03.18
D	Colour code added to legend 16.02.18
C	Colour code added to legend 13.02.18
B	Colour code added to legend 23.01.18
A	Section 96 Issue 14.11.17
P4	Preliminary Issue for discussion & review 10.11.17
P3	Preliminary Issue for discussion & review 24.10.17
P2	Preliminary Issue for discussion & review 09.10.17
P1	Preliminary Issue for discussion & review 14.09.17
No.	Amendment Date

Project
LAWSON CLINIC
 No's 742, 746 - 745A Pacific Highway, Gordon

Drawing
ELEVATIONS SHEET 1

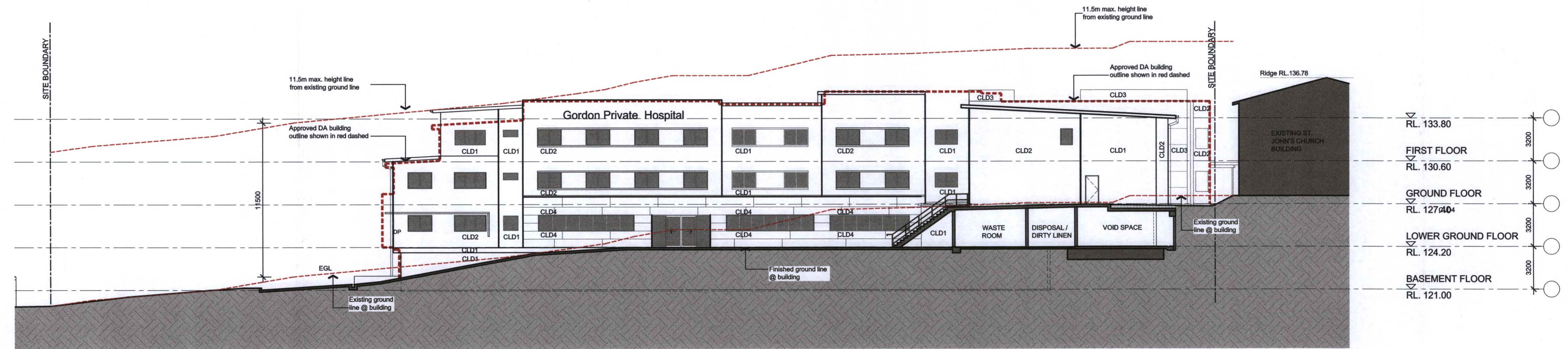
Ku-ring-gai Council
 15 AUG 2013
 Received

THE LAWSON CLINIC
RICHARD CROOKES
CONSTRUCTIONS

boffa robertson group
 architecture, health and aged care planning, project management

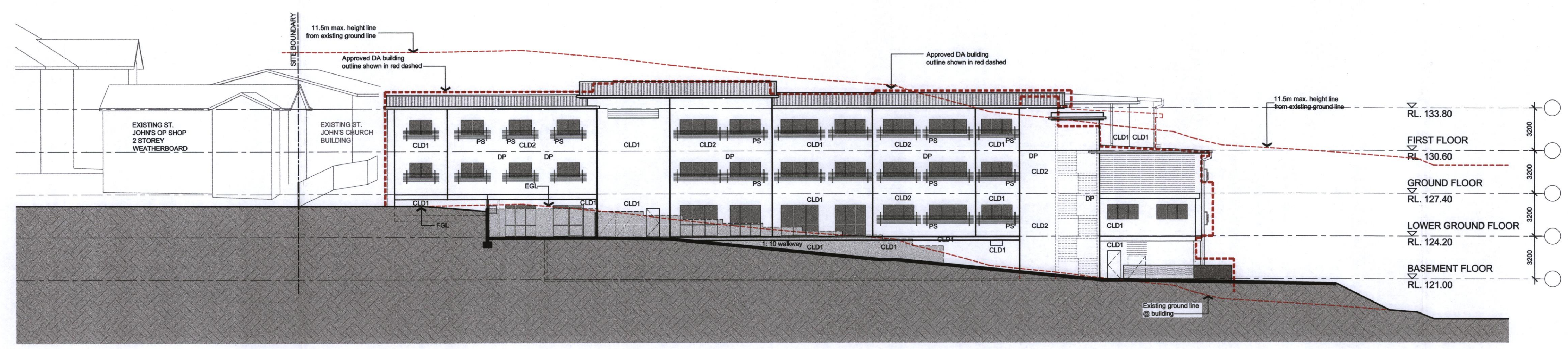
boffa robertson group
 Suite 7, Level 1, Eploa, 9 Railway Street
 Chateau NSW 2067
 AUSTRALIA
 Tel: (02) 9406 7000
 Fax: (02) 9406 7099
 Email: brgroup@brgr.net

Date	AUG 2017	Job No.	Drawing
Scale	1:200 @ A1		
Drawn	HJ / WW		1723 / S96-04
Amendment	F		



1 EAST ELEVATION
 Scale 1:200

LEGEND	
CONC	CONCRETE
CLD1	HEBEL with Dulux AcraTex render
CLD2	HEBEL with Dulux AcraTex render
CLD3	HEBEL with Dulux AcraTex render
CLD4	VITRACORE G2
ROOF GUTTER DPs	WOODLAND GREY
DP	DOWN PIPE
EGL	EXISTING GROUND LINE
FGL	FINISHED GROUND LINE
PS	PRIVACY SCREEN
RT	RETAINING WALL
RWH	RAIN WATER HEAD
TOW	TOP OF WALL
NOTES	
1. Refer to aluminium window & louvre schedule for glazing details	



2 WEST ELEVATION
 Scale 1:200



H	Window sill added	03.08.18
G	Sun shading & colour revision	30.05.18
F	Confirmation of height overruns	23.04.18
E	Response to KMC letter dated 22.02.18	09.03.18
D	Colour code added to legend	16.02.18
C	Material added to legend	13.02.18
B	Colour code added to legend	23.01.18
A	Section 96 Issue	14.11.17
P4	Preliminary issue for discussion	10.11.17
P3	Preliminary issue for discussion	24.10.17
P2	Preliminary issue for discussion	09.10.17
P1	Preliminary issue for discussion	14.09.17
No.	Amendment	Date

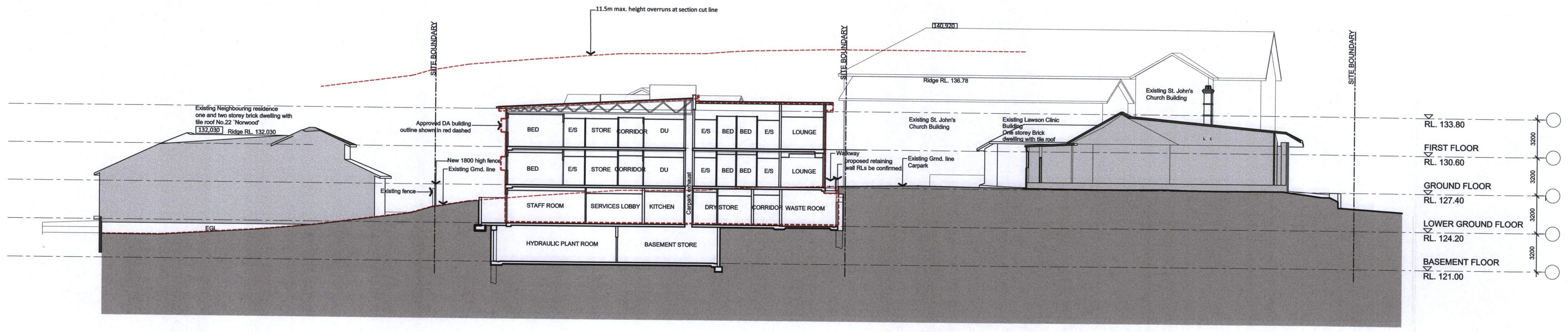
Project
LAWSON CLINIC
 No's 742, 746 - 745A Pacific Highway, Gordon
 Drawing
ELEVATIONS SHEET 2

Ku-ring-gai Council
 15 AUG 2013
 Received

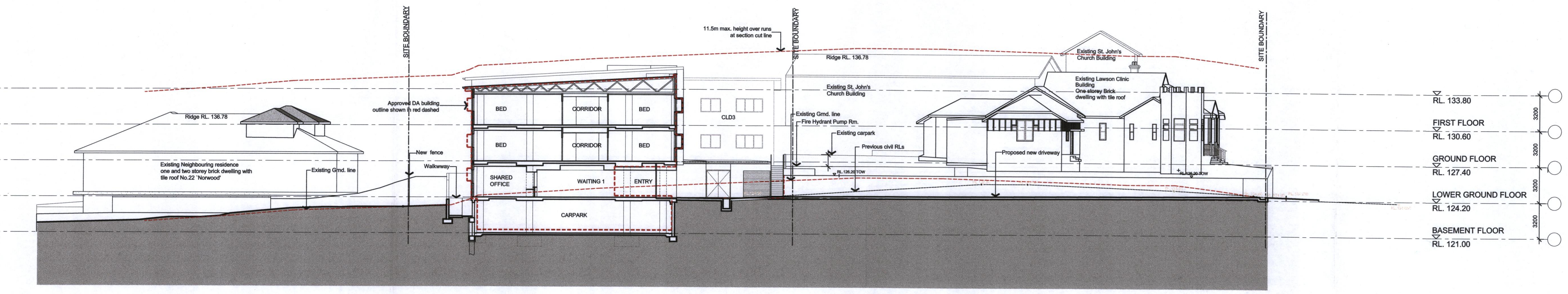
THE LAWSON CLINIC
RICHARD CROOKES CONSTRUCTIONS

boffa robertson group
 architecture, health and aged care planning, project management
 Suite 7, Level 1, Esplanade, 8 Railway Street
 Chateau NSW 2067
 AUSTRALIA
 Tel: (02) 9406 7000
 Fax: (02) 9406 7099
 Email: brgroup@brgr.net

Date	NOV 2017	Job No. : Drawing
Scale	1:200 @ A1	
Drawn	HJ / WW	1723 / S96-05
Amendment	H	



S1 SECTION
 Scale 1:200



S2 SECTION
 Scale 1:200

0m	1	2	5	7m
SCALE: 1:100				
A	Section 96 Issue	14.11.17		
P4	Preliminary Issue for discussion	10.11.17		
P3	Preliminary Issue for discussion	06.10.17		
P2	Preliminary Issue for discussion	19.09.17		
P1	Preliminary Issue for discussion	14.09.17		
No.	Amendment	Date		

Project
LAWSON CLINIC
 No's 742, 746 - 745A Pacific Highway, Gordon

Drawing
SECTIONS SHEET 1 OF 2

Ku-ring-gai Council
 15 AUG 2013
 Received

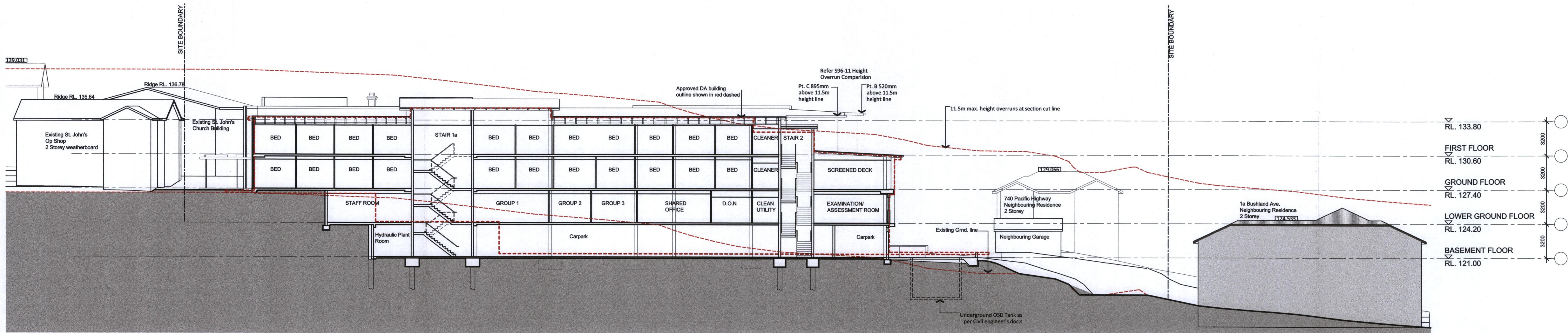
THE LAWSON CLINIC
RICHARD CROOKES
CONSTRUCTIONS

boffa robertson group
 architecture, health and aged care planning, project management

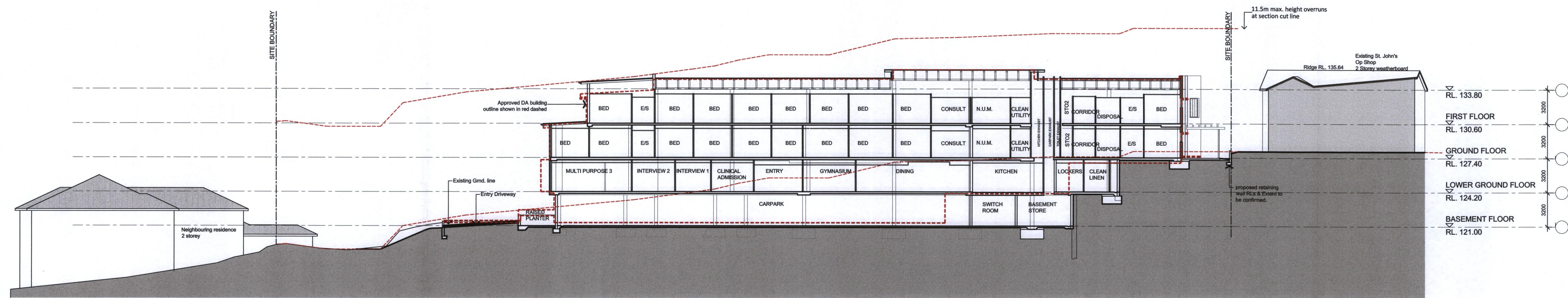
br
 1909

Suite 7, Level 1 Epica, 9 Railway Street
 Chatswood NSW 2067
 AUSTRALIA
 Tel: (02) 9406 7000
 Fax: (02) 9406 7099
 Email: brgroup@brg.net

Date	NOV 2017	Job No.	Drawing
Scale	1:200 @ A1		
Drawn	HJ		1723/S96-06
Amendment	A		



S3 SECTION
 Scale 1:200



S4 SECTION
 Scale 1:200



No.	Amendment	Date
B	Section 96 Issue	23.04.18
A	Section 96 Issue	14.11.17
P4	Preliminary Issue for discussion	10.11.17
P3	Preliminary Issue for discussion	06.10.17
P2	Preliminary Issue for discussion	19.09.17
P1	Preliminary Issue for discussion	14.09.17

Project
LAWSON CLINIC
 No's 742, 746 - 745A Pacific Highway, Gordon
 Drawing
 SECTIONS SHEET 2 OF 2

Kuringgai Council
 15 AUG 2013
 Received

THE LAWSON CLINIC
RICHARD CROOKES
CONSTRUCTIONS
 boffa robertson group
 architecture, health and aged care planning, project management

abr
 199

Suite 7, Level 1 Epicor, 9 Railway Street
 Chateau NSW 2067
 AUSTRALIA
 Tel: (02) 9408 7000
 Fax: (02) 9408 7099
 Email: brgroup@brgr.net

Date	NOV. 2017	Job No. :	Drawing
Scale	1:200 @ A1		
Drawn	HJ		1723/S96-07
Amendment	B		